

This pack is an invitation to take part in an **art activity** within your own home. It is produced by **Focal Point Gallery**, one of Southend-on-Sea Borough Council's culture and leisure venues, currently closed to reduce the spread of coronavirus.



Inside the pack, you will find **two activities**, each designed by local artists, along with a set of colouring pens and a glue stick. Each sheet has instructions to follow but there are no rules or time restrictions; just enjoy a gentle diversion by doodling, colouring or collaging, as you feel like it.



We hope you will find the activities a **fun, relaxing and engaging** thing to do, whatever your age or ability.

If you have access to the internet, please also visit **www.fpg.org.uk** for further activities that you can do at home, you will find these under the project '**Why Don't You...**' The two activities in this pack can also be downloaded from our website and printed for extra copies.

If you want to share your creations:



email: focalpointgallery@southend.gov.uk

social media (don't forget to tag us)

instagram: @focalpointgallery @southendbc

twitter: @FPGSouthend @southendbc

#whydontyou #southend #essex



Activity 1

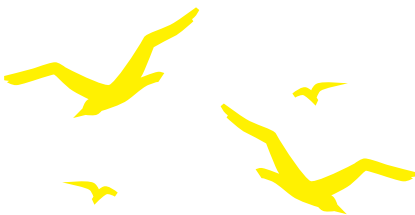
Colouring and Illustration, designed by Louise Ayre

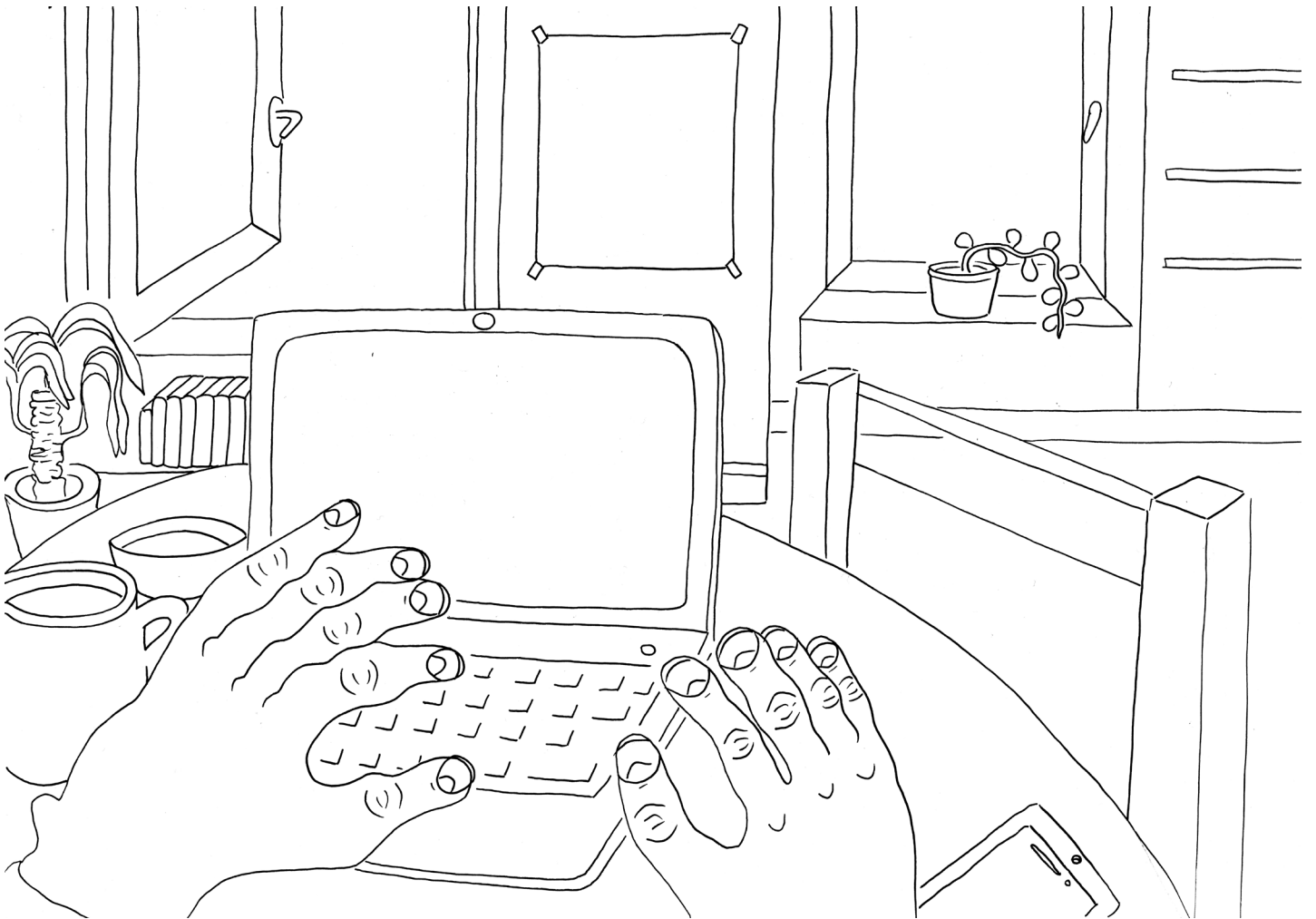
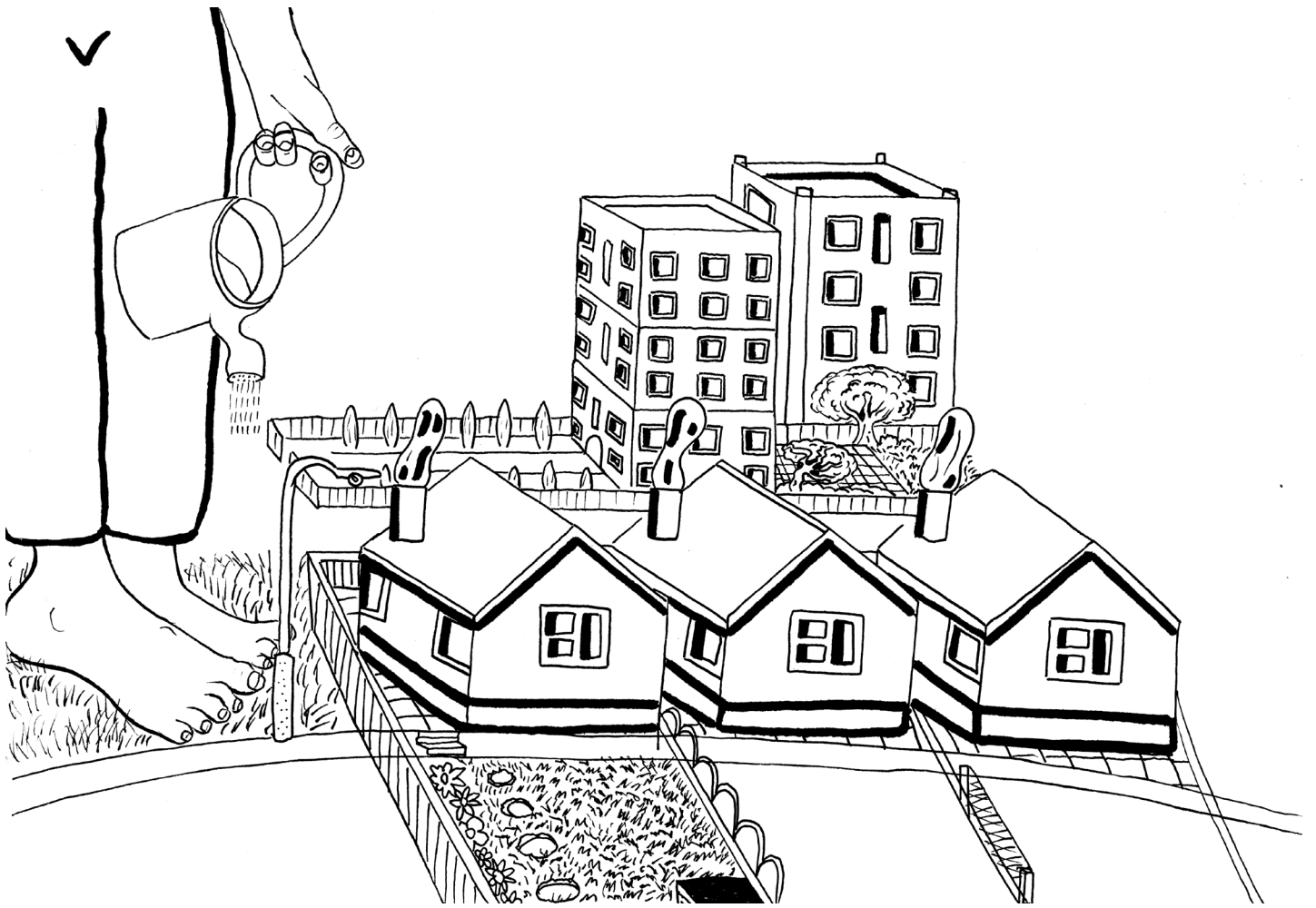
Louise Ayre is a Southend based artist who regularly leads workshops at Focal Point Gallery and is a project leader at Project 49.

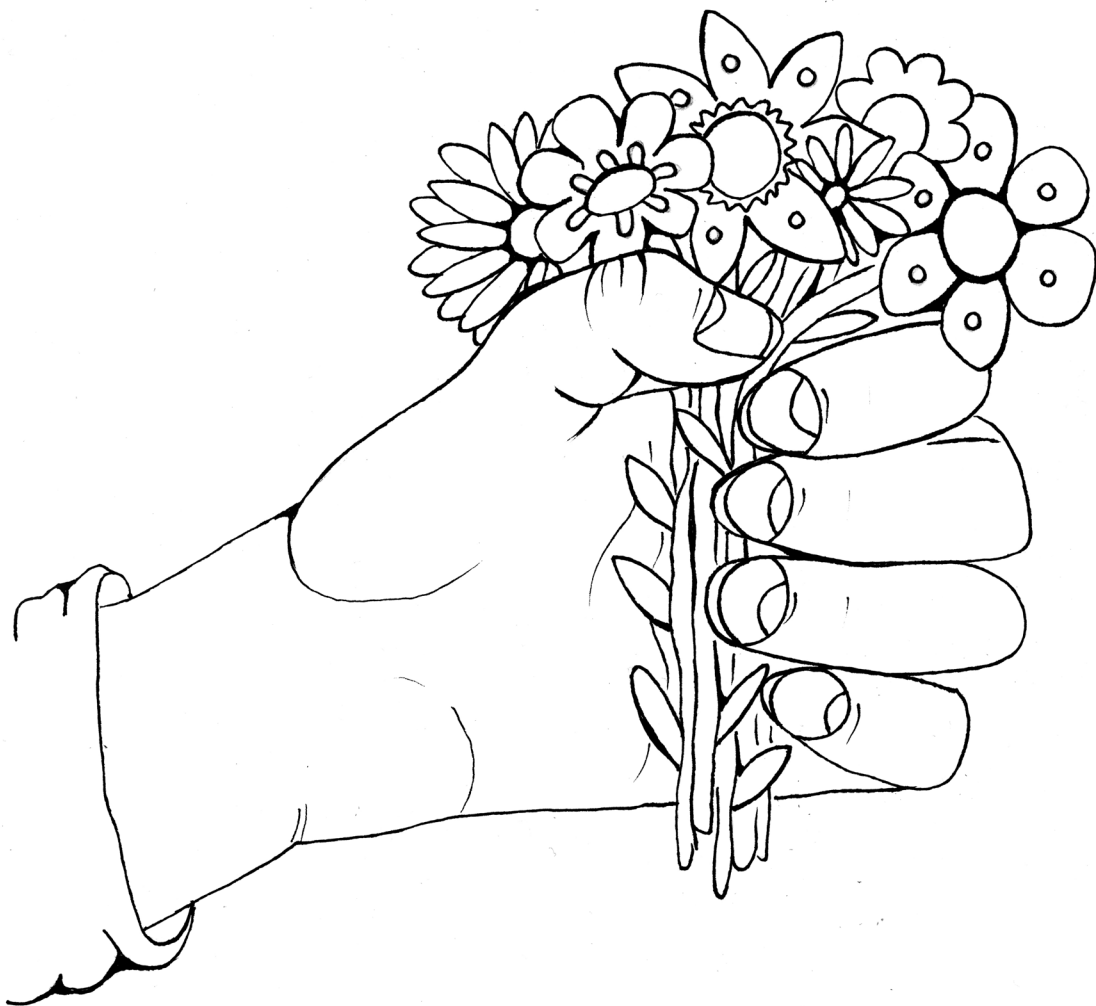
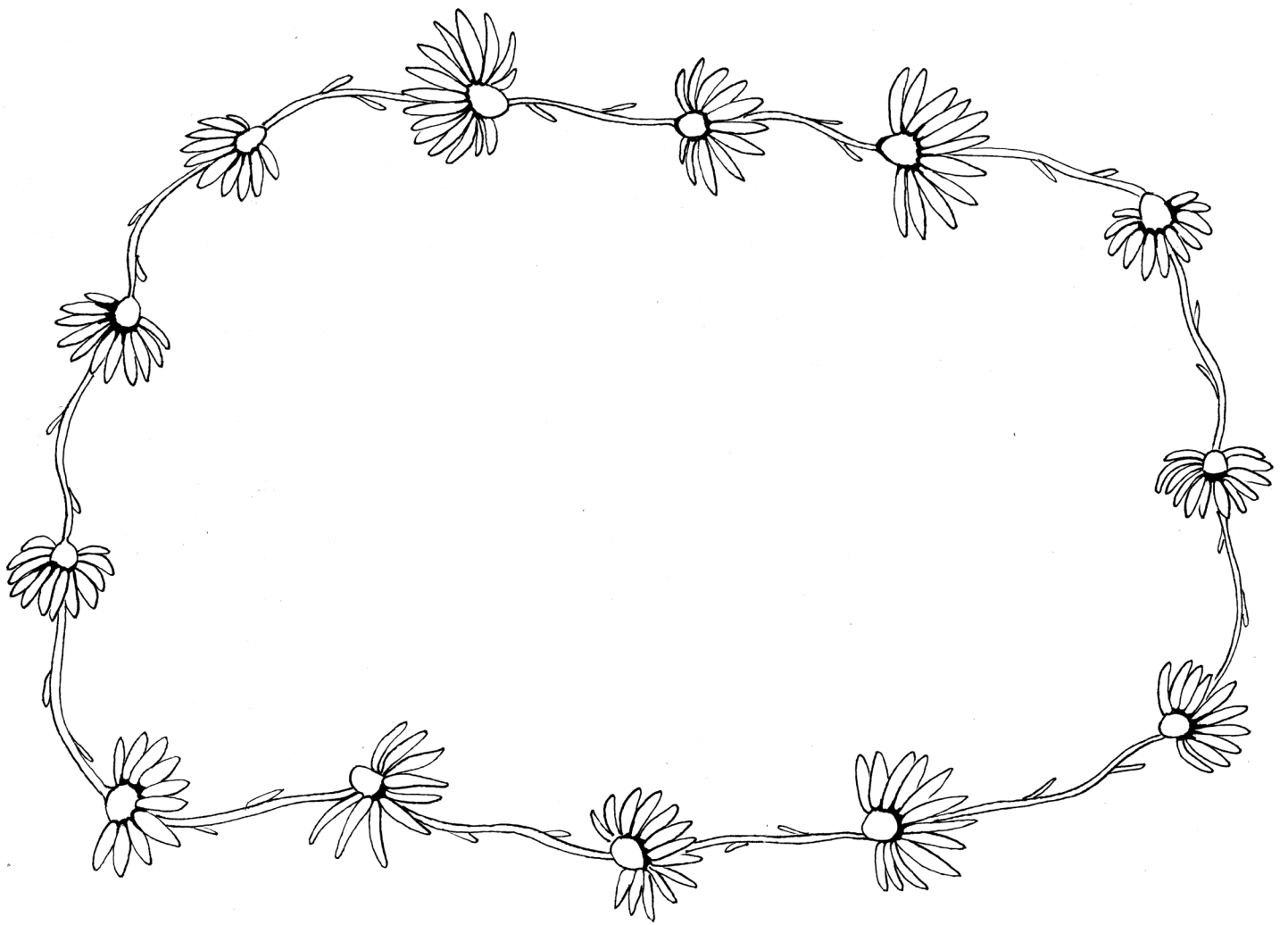
You can follow Louise on Instagram @louichoooo

Thinking about spaces we inhabit, the objects we accumulate and what they say about us, Louise has developed a series of illustrations that can be coloured in. You are welcome to make your artwork as colourful as you want, using the enclosed set of pens or materials you have at home.

Louise's storyline may also inspire you to create your own illustrations and share your story. We would love to see them!

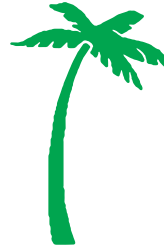






Activity 2

Colouring and Collage, Philippa Stewart

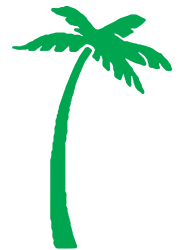


Philippa Stewart is an artist and designer who lives in Southend. She has exhibited in multiple group exhibitions and has delivered a range of workshops at Focal Point Gallery, Trust Links, local schools and Southend Adult Learning College. She is a freelance designer, researcher and textile dyer and is also in the current TOMA cohort (The Other MA), based in Southend.

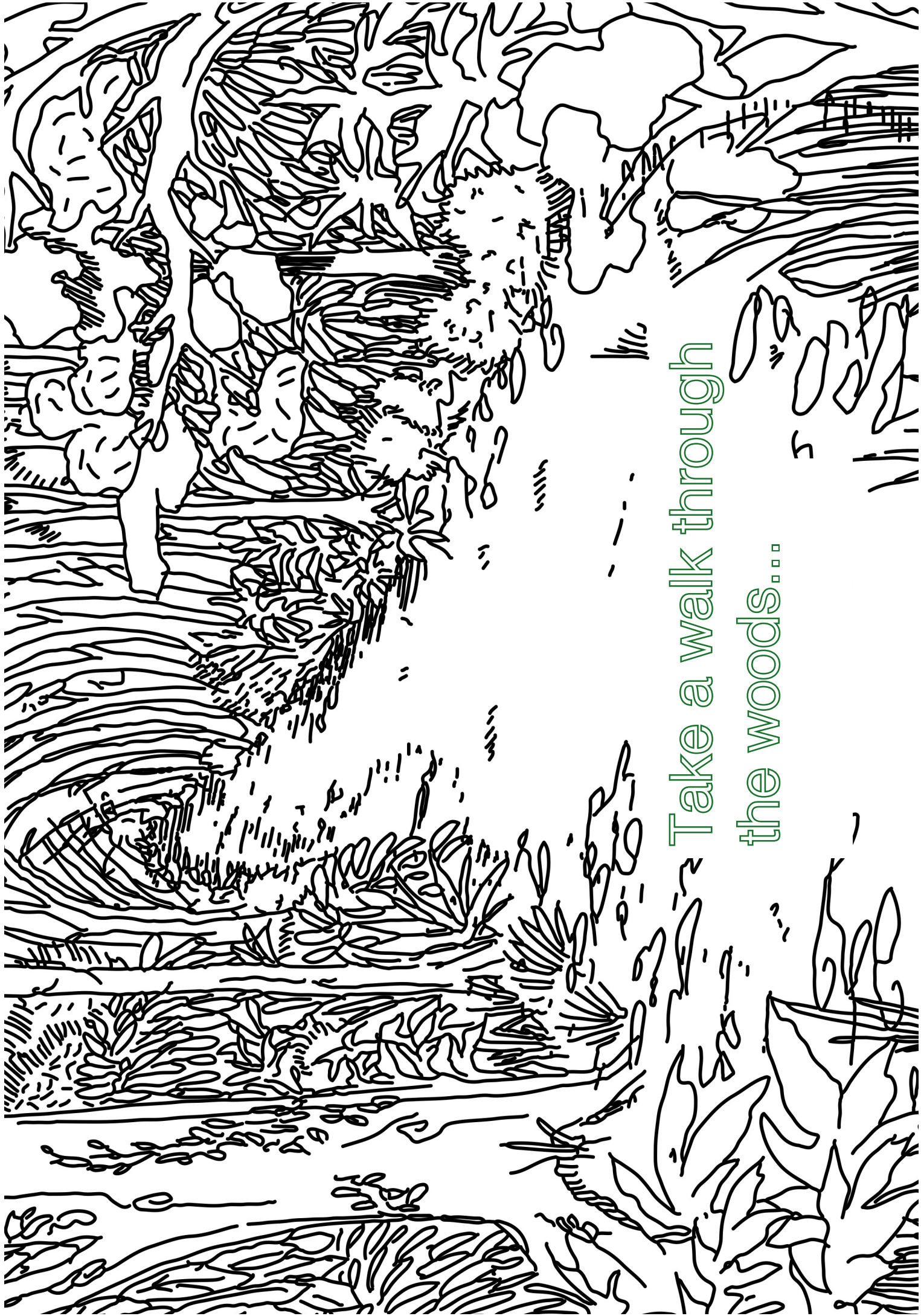
Website: www.philippastewart.com

Instagram: @philippa.stewart

Philippa has created an activity, '**The Essex Orchid Trail**' that invites you to colour and collage your way through nature. Please find in your pack a glue stick to fix items from your recycling e.g. sweet wrappers, cut up crisp bags, leaflets, newspaper or anything you can find! Take a walk through the woods to find the Essex orchid... Don't be afraid to colour outside, inside, over and through the lines; it's your activity!



You can also find an extended version of 'The Essex Orchid Trail' on www.fpg.org.uk and available in print at Focal Point Gallery when we open again and it is safe to visit.



Take a walk through
the woods...



You have found:
The Orchis Masculula

Found in the open
grass lands,
hedge rows and
ancient

woodlands of Essex.



Make a collage: colour, cut out, layer and stick





If you enjoyed this activity, please come to see us when it is safe to do so and show us what you have created. **Focal Point Gallery** is based in **the Forum** – in the same building as the Central Library – located next to Southend High Street, in Elmer Square (the site of the old Farringdon car park).

Focal Point Gallery offers a number of activities open to people of all ages, backgrounds, interests and abilities, including free exhibitions and regular talks, and workshops. We have a friendly team who will be very happy to guide you round the exhibition and direct you to the activities that may interest you. Our regular programme includes art clubs for children and young people, schools and home educated sessions, family and inter-generational activities, talks, tours and artist-led workshops. If you are interested in joining our new Contemporary Elders group, please come and tell us what kind of things you would be interested in. All activities are low cost or free to attend.



Focal Point Gallery is wheelchair accessible and there are additional materials available to enhance your visit, e.g. large print information sheets, family activity sheets and dedicated quiet times. The team will be happy to support your needs and more information can be found on at **www.fpg.org.uk**. When we are open again, you can also telephone us on 01702 534108.



FPG

We look forward to seeing you in safer times!

